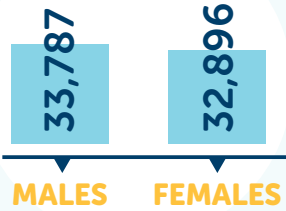


## POPULATION: 66,683



**1.9%**  
INDIGENOUS

**8,253**  
AGE PENSION

## SERVICES:

**15**  
General Practices

**8**  
General Practice Outreach Services

**96**  
GPs

**14**  
Public Hospitals and Health Services

**30**  
Mental Health Services

## Mental Health



### The Limestone Coast region is:



Above the state average rate for:

- Self reported current mental health condition (SAMSS)
- Anti-depressant prescriptions (aged 0-64)
- ADHD related prescriptions (aged <18)



Below the state average rate for:

- High/Very High psychological distress (SAMSS)
- Psychological Therapy Services provided
- GP Mental Health Plans prepared
- Anxiolytic and Antipsychotic prescription

## Mental Health, Alcohol and other Drugs



### Community Consultations – Key Recommendations



Increased psychosocial support services, prevention and education activities



Treatment of the root cause of problems and not just the corresponding symptoms



Increased government funding and specialist service affordability



Telehealth service implementation to support existing services but not replace face to face consultations



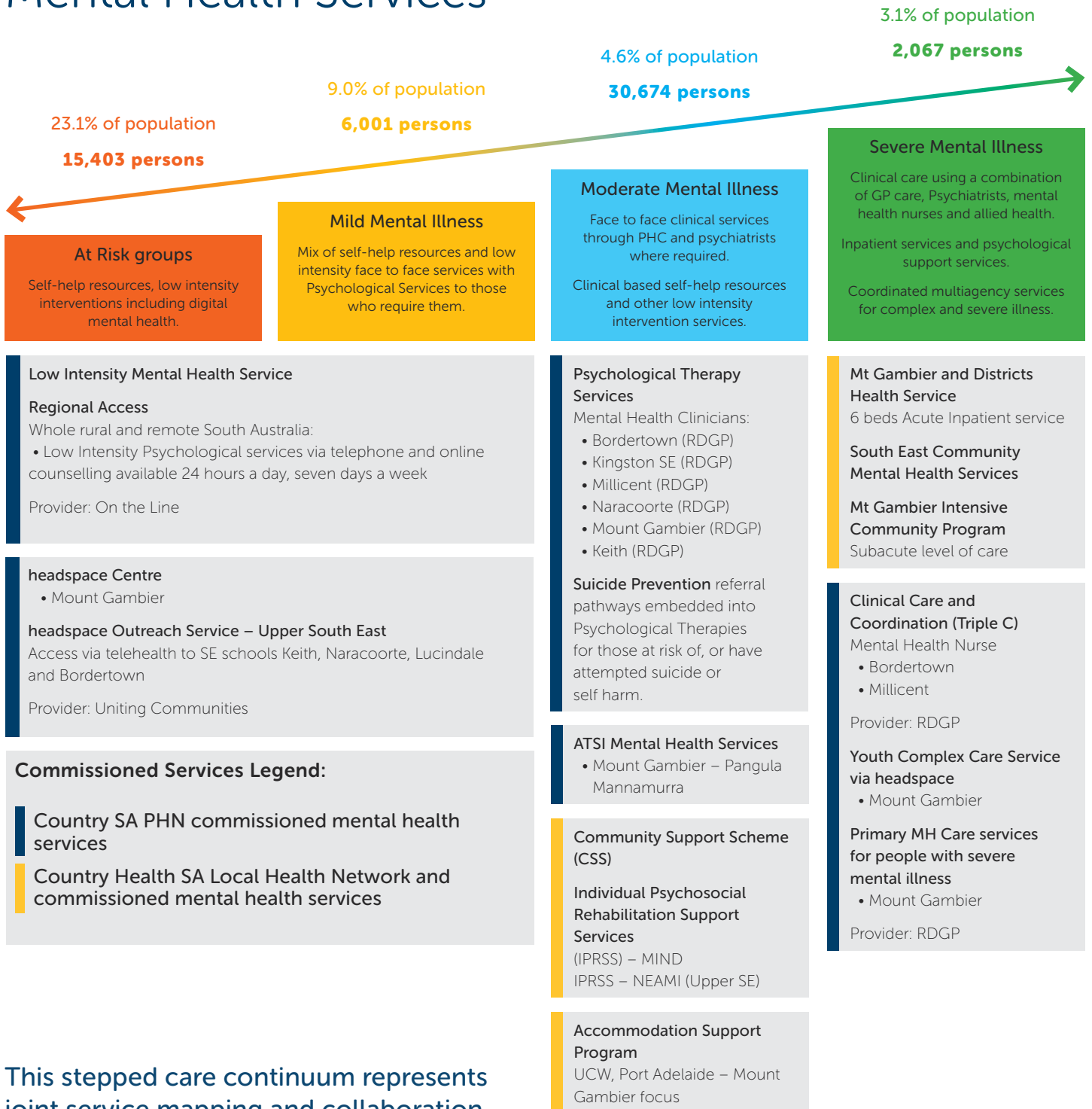
Detoxification services and family support for clients wishing to recover and reform



The introduction of a crisis centre for early intervention

# Regional Stepped Care

## Limestone Coast Mental Health Services



This stepped care continuum represents joint service mapping and collaboration between **Country SA PHN** and **Country Health SA Local Health Network**.

Source data: PHN Primary Mental Health Care Flexible Funding Pool Implementation Guidance

