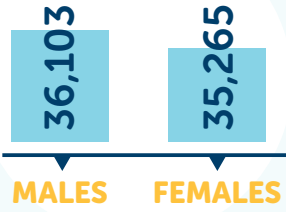


Riverland, Mallee & Coorong

POPULATION:
71,368



3.7%

INDIGENOUS

11,309

AGE PENSION

SERVICES:



Mental Health



The Riverland, Mallee & Coorong region is:



Above the state average rate for:

- Anti-depressant, anxiolytic and antipsychotic prescriptions (aged 18-64)
- Psychological Therapy Services referrals (Riverland)
- Highest rate in Country SA for Psychology Therapy Services and referrals per population



Below the state average rate for:

- Self-reported current mental health condition
- High levels of psychological distress (SAMSS)
- GP Mental Health Plans prepared
- GPs and specialists

Mental Health, Alcohol and other Drugs



Community Consultations – Key Recommendations



Increased psychosocial support services for discharge services



Utilisation of community leaders as a means of spreading knowledge on health pathways



Better coordination between health services and information sharing over a single client database



Early intervention, harm prevention and community training on service availabilities and general mental health



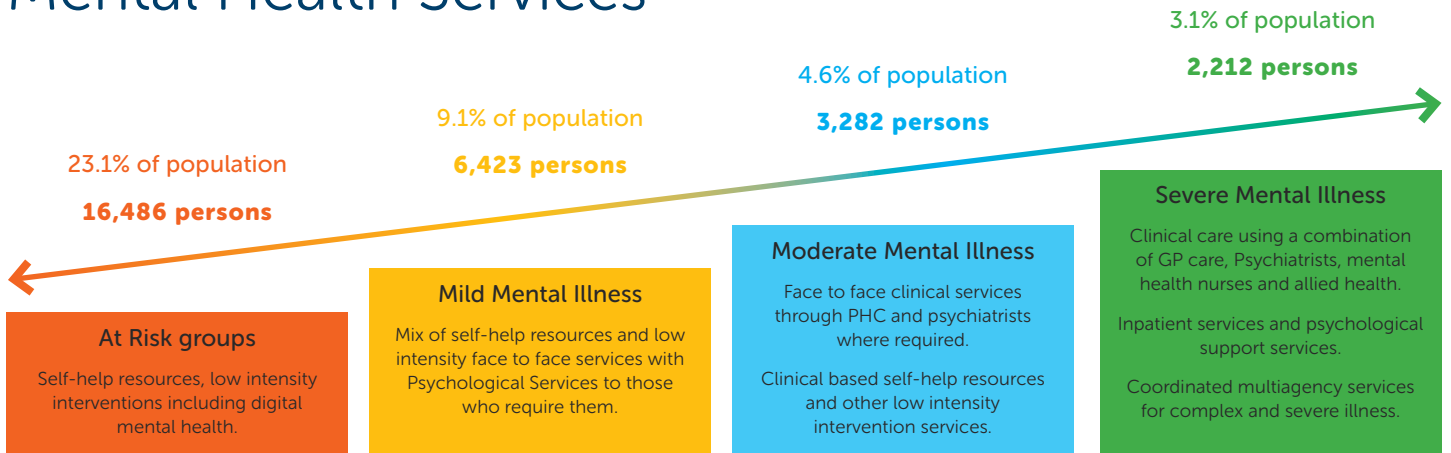
Extended hours for health clinics including after-hours services



Bridging the gap between detoxification and rehabilitation services

Regional Stepped Care

Riverland, Mallee & Coorong Mental Health Services



At Risk groups
Self-help resources, low intensity interventions including digital mental health.

Mild Mental Illness
Mix of self-help resources and low intensity face to face services with Psychological Services to those who require them.

Moderate Mental Illness
Face to face clinical services through PHC and psychiatrists where required.
Clinical based self-help resources and other low intensity intervention services.

Severe Mental Illness
Clinical care using a combination of GP care, Psychiatrists, mental health nurses and allied health.
Inpatient services and psychological support services.
Coordinated multiagency services for complex and severe illness.

Anglican Community Care Riverland Aboriginal Youth complex needs Accommodation support program (ASP)

Low Intensity Mental Health Service
Regional Access
Whole of Riverland, Mallee & Coorong:
• Low Intensity Psychological services via telephone and online counselling available 24 hours a day, seven days a week
Provider: On the Line

headspace Centre
• Berri
• Murray Bridge

Commissioned Services Legend:
Country SA PHN commissioned mental health services
Country Health SA Local Health Network and commissioned mental health services

Psychological Therapy Services
Mental Health Clinicians:
• Berri (RDGP)
• Waikerie (RDGP)
• Barmera (RDGP)
• Pinnaroo (RDGP)
• Renmark (RDGP)
• Murray Bridge (MMGPN)
• Meningie (MMGPN)
• Tailem Bend (MMGPN)
• Karoonda (MMGPN)
Suicide Prevention referral pathways embedded into Psychological Therapies for those at risk of, or have attempted suicide or self harm.

ATSI Mental Health Services
• Murray Bridge – Ninkowar Inc. Aboriginal Mental Health First Aid (AMHFA) training and information workshops
• Berri – Aboriginal Sobriety Group

Primary MH Care services for people with severe mental illness
• Berri (RDGP)
Youth Complex Care Service via headspace:
• Berri
• Murray Bridge
Riverland General Hospital 6 beds Acute Inpatient service
Riverland Community Mental Health Service
Murray Mallee Community Mental Health Service

Community Support Scheme (CSS)
Individual Psychosocial Rehabilitation Support Services (IPRSS) – MIND/NEAMI
• Murray Bridge targeted at Youth

This stepped care continuum represents joint service mapping and collaboration between **Country SA PHN** and **Country Health SA Local Health Network**.

Source data: PHN Primary Mental Health Care Flexible Funding Pool Implementation Guidance

